

**ELST65W, ELST65B, ELST65BZ, ELST65N;  
ELST75W, ELST75B, ELST75BZ, ELST75N**

Moa Collection  
Mini LED Step Light  
with Angled Louver



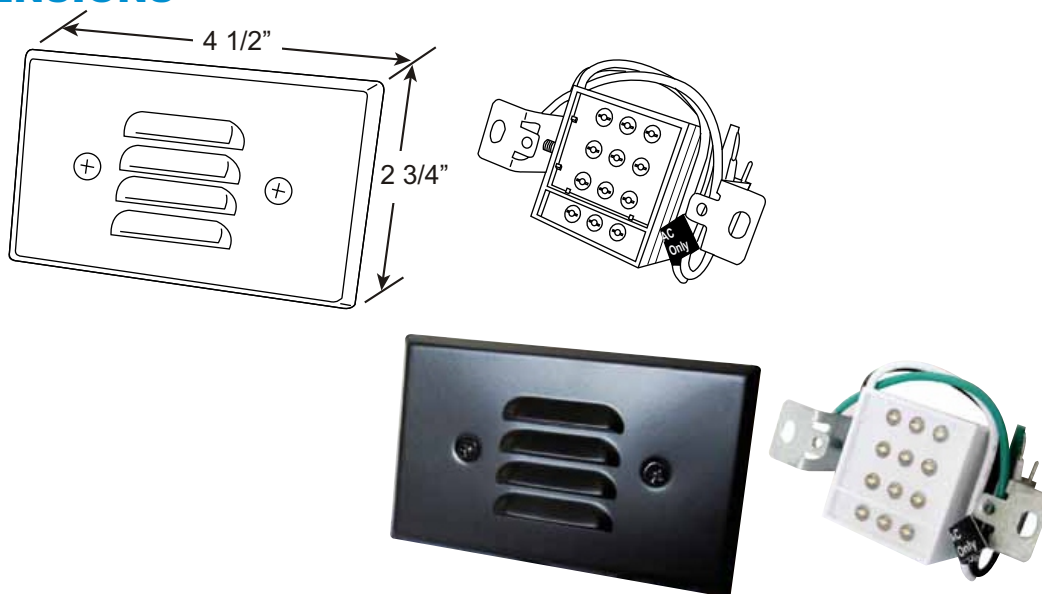
## PROJECT INFORMATION:

Project Name: \_\_\_\_\_

Fixture Type: \_\_\_\_\_

Date: \_\_\_\_\_

## DIMENSIONS



## PRODUCT SPECIFICATIONS

• Galvanized stamped steel powder coated faceplate. **Lamp:** LED array (12), CRI 90+

• Integrated LED board and driver.

• Suitable for horizontal mounting.

• Lamp bracket is secured to std single gang receptacle box by 2 screws.

• 35,000 hours life - L70.

**ELST65:** 120V, 0.8W, 3000K, 50 lm

**ELST75:** 12V, 0.8W, 3000K, 50 lm

**Housing:** Single gang receptacle box (not included)

**Labels:** U.L. listed for wet location

## CATALOG NUMBER

**Example:** ELST65B (Black)  
ELST75BZ (Bronze)  
ELST65N (Brushed Nickel)  
ELST75W (White)